



FLUID FILTRATION

MANUFACTURING CORP.

Wire Mesh

Accomplish the finest Filtration with our screen baskets. These baskets are specifically designed to meet requirements, whereby absolute purification is critical. Fluid Filtration Manufacturing Corp. can incorporate its regular perforated sheet metal baskets with finer commercial grade wire cloth to achieve the ultimate filtration. In addition, we can increase these baskets potential with our magnet insertion, therefore doubling their filtering abilities. Our mesh screen baskets can be constructed from various wire cloths. Please refer to table for mesh size.

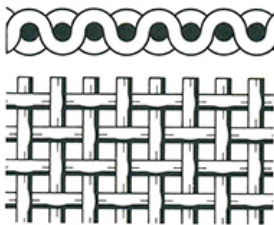
Mesh Specifications

Materials	Brass	Stainless Steel										Monel			
Mesh Size		20	30	40	50	60	80	100	120	160	200	250	325	400	

Standard Mesh Technical Data

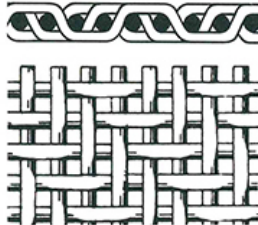
Mesh	Hole Opening Inches	Nearest Perf.	Hole Opening Microns	Wire Diameter Inches	Material	% Open Area
20 x 20	0.034	1/32"	860	0.016	all	46.2
30 x 30	0.027	-	681	0.0065	all	64.8
30 x 30	0.0213	-	540	0.012	all	40.8
40 x 40	0.015	1/64"	380	0.01	all	36
50 x 50	0.011	-	280	0.009	all	30.3
60 x 60	0.0092	-	230	0.0075	all	30.5
80 x 80	0.007	-	180	0.0055	all	31.4
100 x 100	0.0055	-	140	0.0045	all	30.3
120 x 120	0.0046	-	117	0.0037	all	30.7
150 x 150	0.0041	-	104	0.0026	all	37.4
160 x 160	0.0038	-	97	0.0025	all	36.4
170 x 170	0.0035	-	89	0.0024	all	35.1
180 x 180	0.0033	-	84	0.0023	all	34.7
200 x 200	0.0029	-	74	0.0021	all	33.6

Plain Weave



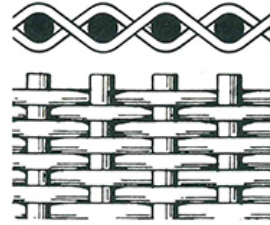
Plain weave wire mesh is woven by alternating the shute wire over and under the warp wire, creating a wire mesh.

Twilled Weave



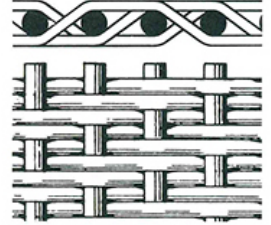
Twill weave wire mesh is woven by passing the shute wire over and under two warp wires, creating a sturdier weave. This weave allows for the use of heavier wires, producing a stronger wire mesh.

Plain Dutch Weave



Plain Dutch weave wire mesh is woven using two sizes of wire. Smaller wires, as small as micron size, are used in the shute direction and are woven with a larger warp wire. The smaller wires are woven tightly together, providing a tight mesh for filtering. The larger wire provides strength to the mesh.

Twilled Dutch Weave



Twilled Dutch weave wire mesh combines Dutch and twill weaving to provide a fine mesh filtering cloth. Shute wires are passed over and under two warp wires, providing a tight, fine filter with tapered openings.

Material available are Monel, Phosphor Bronze, and Stainless Steel
All data subject to manufacturing tolerances.

